





# CP / CP-G / DCP / DCP-G - 2 POLOS

ELECTROBOMBA EN LÍNEA



## DCP/DCP-G DOBLE EMBRIDADA

DCP / DCP-G - 2800 r.p.m - 2 polos

| MODELO | CÓDIGO        | LONG. ENTRE BRIDA mm | CONEX. BRIDA | DATOS ELÉCTRICOS |             |      |      | DATOS HIDRÁULICOS |      |       |      |      |      |      |      |     |     |      |       |     |     |
|--------|---------------|----------------------|--------------|------------------|-------------|------|------|-------------------|------|-------|------|------|------|------|------|-----|-----|------|-------|-----|-----|
|        |               |                      |              | ALIMENT. 50 Hz   | P2 NOMINAL  |      | In A |                   | m³/h | 6     | 7,5  | 9    | 10,5 | 12   | 13,5 | 15  | 18  | 21   |       |     |     |
|        |               |                      |              |                  | kW          | HP   | 230  | 400               |      |       |      |      |      |      |      |     |     |      | l/min | 100 | 125 |
| DN 40  | DCP 40/1250 T | 60180108             | 340          | DN 40            | 3x230-400V~ | 0,75 | 1    | 2,9               | 1,7  | H (m) | 12,5 | 11,5 | 10,5 | 9,5  | 8,1  | 6,8 | 5,2 |      |       |     |     |
|        | DCP 40/1650 T | 60180109             | 340          | DN 40            | 3x230-400V~ | 0,75 | 1    | 2,9               | 1,7  |       | 16,5 | 15,5 | 14,5 | 13,5 | 12,3 | 11  | 9,5 | 6    |       |     |     |
|        | DCP 40/2050 T | 60180110             | 340          | DN 40            | 3x230-400V~ | 1,1  | 1,5  | 4,3               | 2,5  |       | 20,5 | 20   | 19   | 18   | 17   | 16  | 15  | 11,5 | 7,5   |     |     |
|        | DCP 40/2450 T | 60180111             | 340          | DN 40            | 3x230-400V~ | 1,5  | 2    | 5,9               | 3,4  |       | 24,5 | 24   | 23,5 | 23   | 22   | 21  | 20  | 16,5 | 13    |     |     |

| MODELO | CÓDIGO        | LONG. ENTRE BRIDA mm | CONEX. BRIDA | DATOS ELÉCTRICOS |             |     |      | DATOS HIDRÁULICOS |      |       |      |      |      |      |      |      |       |
|--------|---------------|----------------------|--------------|------------------|-------------|-----|------|-------------------|------|-------|------|------|------|------|------|------|-------|
|        |               |                      |              | ALIMENT. 50 Hz   | P2 NOMINAL  |     | In A |                   | m³/h | 15    | 18   | 21   | 24   | 27   | 30   | 36   |       |
|        |               |                      |              |                  | kW          | HP  | 230  | 400               |      |       |      |      |      |      |      |      | l/min |
| DN 50  | DCP 50/1550 T | 60180112             | 365          | DN 50            | 3x230-400V~ | 1,5 | 2    | 5,9               | 3,4  | H (m) | 15,5 | 15   | 14,1 | 13   | 11,8 | 10,5 | 7     |
|        | DCP 50/1900 T | 60180113             | 365          | DN 50            | 3x230-400V~ | 2   | 2,7  | 8                 | 4,6  |       | 19   | 18,5 | 17,5 | 16,5 | 15,5 | 14,5 | 10,5  |
|        | DCP 50/2450 T | 60180114             | 365          | DN 50            | 3x230-400V~ | 3   | 4    | 10,2              | 5,9  |       | 24,5 | 24   | 23,5 | 23   | 22   | 20,5 | 17    |
|        | DCP 50/3000 T | 60180115             | 365          | DN 50            | 3x230-400V~ | 3   | 4    | 10,2              | 5,9  |       | 30   | 29   | 28   | 26,5 | 25   | 23   | 18    |
|        | DCP 50/3650 T | 60180116             | 410          | DN 50            | 3x230-400V~ | 4   | 5,5  | 13,5              | 7,8  |       | 36,5 | 35,5 | 34,5 | 33,5 | 32,5 | 31   | 27    |

¹ Posibilidad arranque en estrella (Δ)

| MODELO                  | CÓDIGO                    | LONG. ENTRE BRIDA mm | CONEX. BRIDA | DATOS ELÉCTRICOS |             |      |      | DATOS HIDRÁULICOS |      |       |      |      |      |      |      |      |      |      |      |       |
|-------------------------|---------------------------|----------------------|--------------|------------------|-------------|------|------|-------------------|------|-------|------|------|------|------|------|------|------|------|------|-------|
|                         |                           |                      |              | ALIMENT. 50 Hz   | P2 NOMINAL  |      | In A |                   | m³/h | 0     | 30   | 42   | 48   | 54   | 60   | 66   | 84   | 90   | 102  |       |
|                         |                           |                      |              |                  | kW          | HP   | 230  | 400               |      |       |      |      |      |      |      |      |      |      |      | l/min |
| DN 65                   | DCP-G 65-1470/A/BAQE/1,5  | 60180117             | 360          | DN 65            | 3x230-400V~ | 1,5  | 2    | 5,20              | 3    | H (m) | 14,4 | 10,6 | 7,0  | 5,3  |      |      |      |      |      |       |
|                         | DCP-G 65-1900/A/BAQE/2,2  | 60180118             | 360          | DN 65            | 3x230-400V~ | 2,2  | 3    | 7,97              | 4,6  |       | 18,6 | 14,2 | 10,5 | 8,3  |      |      |      |      |      |       |
|                         | DCP-G 65-2280/A/BAQE/3    | 60180119             | 360          | DN 65            | 3x400V~¹    | 3    | 4    | -                 | 5,6  |       | 22,3 | 18,4 | 14,7 | 12,5 | 10,2 |      |      |      |      |       |
|                         | DCP-G 65-2640/A/BAQE/4    | 60180120             | 360          | DN 65            | 3x400V~¹    | 4    | 5,5  | -                 | 8,2  |       | 25,9 | 22,2 | 18,8 | 16,4 | 14   | 11,4 |      |      |      |       |
|                         | DCP-G 65-3400/A/BAQE/5,5  | 60180121             | 360          | DN 65            | 3x400V~¹    | 5,5  | 7,5  | -                 | 10,2 |       | 33,3 | 29,7 | 25,0 | 21,7 | 18,2 |      |      |      |      |       |
|                         | DCP-G 65-4100/A/BAQE/7,5  | 60167348             | 360          | DN 65            | 3x400V~¹    | 7,5  | 10   | -                 | 14,4 |       | 40,2 | 37,4 | 33,4 | 30,7 | 27,5 | 23,9 | 20,1 |      |      |       |
|                         | DCP-G 65-4700/A/BAQE/11   | 60167349             | 475          | DN 65            | 3x400V~¹    | 11   | 15   | -                 | 19,9 |       | 46,4 | 44,3 | 42,6 | 41,3 | 39,6 | 38,1 | 35,9 | 28,4 |      |       |
|                         | DCP-G 65-5500/A/BAQE/15   | 60167350             | 475          | DN 65            | 3x400V~¹    | 15   | 20   | -                 | 26,8 |       | 54,3 | 54,7 | 52,1 | 51,2 | 49,4 | 48   | 45,6 | 38,4 | 36,1 |       |
|                         | DCP-G 65-6150/A/BAQE/18,5 | 60167351             | 475          | DN 65            | 3x400V~¹    | 18,5 | 25   | -                 | 33   |       | 60,8 | 60,7 | 59,7 | 58,4 | 56,5 | 55,2 | 53,3 | 46,7 | 43,8 | 37,8  |
|                         | DCP-G 65-7350/A/BAQE/22   | 60167352             | 475          | DN 65            | 3x400V~¹    | 22   | 30   | -                 | 38,1 |       | 72,6 | 73,4 | 71,6 | 70,9 | 68   | 65,1 | 63,2 | 54,9 | 51,5 | 43,1  |
| DCP-G 65-9250/A/BAQE/30 | 60167353                  | 475                  | DN 65        | 3x400V~¹         | 30          | 40   | -    | 52,1              | 91,4 | 92    | 91,2 | 89,7 | 87,2 | 85   | 82,5 | 74,6 | 70,5 | 63,3 |      |       |

¹ Posibilidad arranque en estrella (Δ)

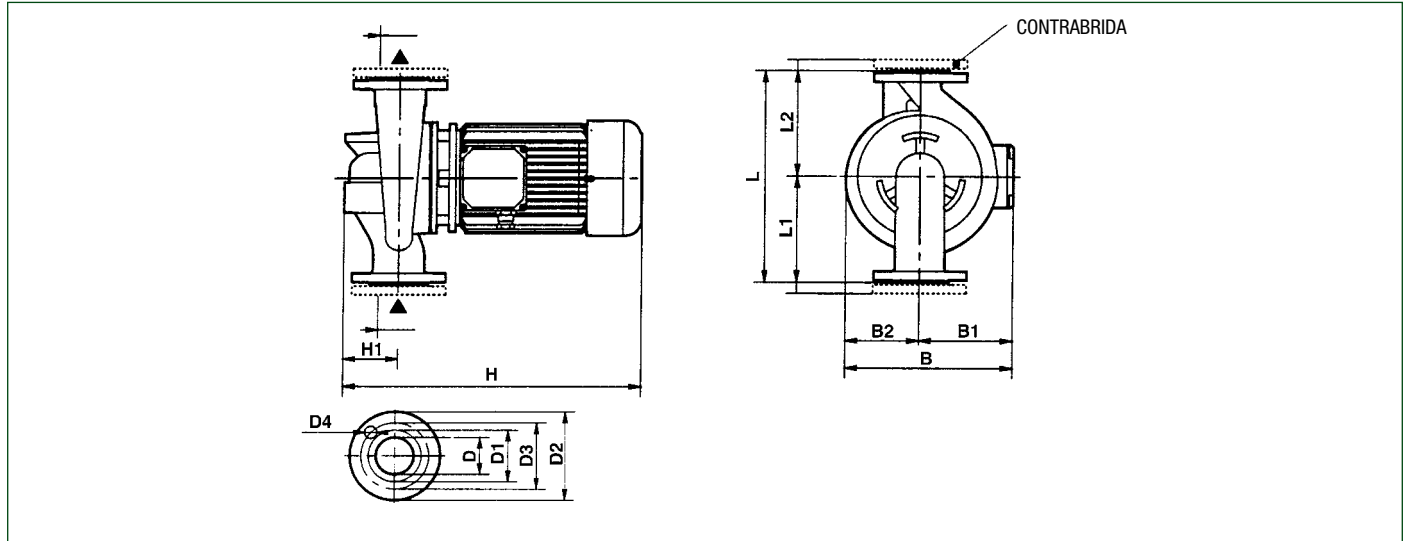


# CP / CP-G / DCP / DCP-G - 2 POLOS

ELECTROBOMBA EN LÍNEA

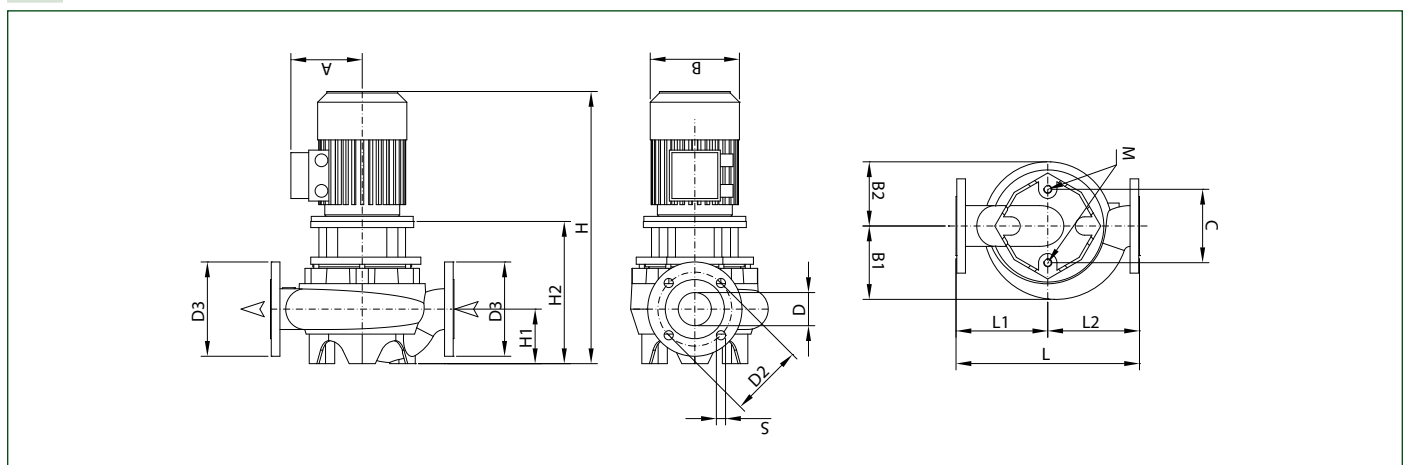


## CP



| MODELO       | L   | L1  | L2  | B   | B1  | B2  | H   | H1  | D        | D1  | D2  | D3  | D4<br>n° AGUJ. | DIMENSIONES EMBALAJE |     |     | VOLUMEN<br>(mc) | PESO<br>Kg |
|--------------|-----|-----|-----|-----|-----|-----|-----|-----|----------|-----|-----|-----|----------------|----------------------|-----|-----|-----------------|------------|
|              |     |     |     |     |     |     |     |     |          |     |     |     |                | L/A                  | L/B | H   |                 |            |
| CP 40/1900 T | 390 | 200 | 190 | 231 | 118 | 113 | 453 | 95  | 40 PN 16 | 88  | 150 | 110 | 4<br>Ø 14      | 680                  | 330 | 580 | 0,13            | 41         |
| CP 40/2300 T | 390 | 200 | 190 | 231 | 118 | 113 | 453 | 95  | 40 PN 16 | 88  | 150 | 110 |                | 680                  | 330 | 580 | 0,13            | 41         |
| CP 40/2700 T | 390 | 200 | 190 | 231 | 118 | 113 | 453 | 95  | 40 PN 16 | 88  | 150 | 110 |                | 680                  | 330 | 580 | 0,13            | 40         |
| CP 40/3500 T | 390 | 200 | 190 | 231 | 118 | 113 | 453 | 95  | 40 PN 16 | 88  | 150 | 110 |                | 680                  | 330 | 580 | 0,13            | 44         |
| CP 40/3800 T | 320 | 170 | 150 | 257 | 149 | 108 | 485 | 100 | 40 PN 6  | 88  | 150 | 110 |                | 450                  | 270 | 465 | 0,4             | 37         |
| CP 40/4700 T | 380 | 200 | 180 | 286 | 159 | 127 | 535 | 100 | 40 PN 6  | 88  | 150 | 110 |                | 450                  | 270 | 465 | 0,4             | 50         |
| CP 40/5500 T | 380 | 200 | 180 | 286 | 159 | 127 | 535 | 100 | 40 PN 6  | 88  | 150 | 110 |                | 450                  | 270 | 465 | 0,4             | 55         |
| CP 40/6200 T | 380 | 200 | 180 | 286 | 159 | 127 | 535 | 100 | 40 PN 6  | 88  | 150 | 110 |                | 450                  | 270 | 465 | 0,4             | 56         |
| CP 50/2200 T | 425 | 225 | 200 | 233 | 120 | 113 | 463 | 105 | 50 PN 16 | 102 | 165 | 125 | 4<br>Ø 18      | 680                  | 330 | 580 | 0,13            | 38,6       |
| CP 50/2600 T | 425 | 225 | 200 | 233 | 120 | 113 | 463 | 105 | 50 PN 16 | 102 | 165 | 125 |                | 680                  | 330 | 580 | 0,13            | 39         |
| CP 50/3100 T | 425 | 225 | 200 | 233 | 120 | 113 | 537 | 105 | 50 PN 16 | 102 | 165 | 125 |                | 680                  | 330 | 580 | 0,13            | 36         |
| CP 50/4100 T | 425 | 225 | 200 | 233 | 120 | 113 | 537 | 105 | 50 PN 16 | 102 | 165 | 125 |                | 680                  | 330 | 580 | 0,13            | 36         |
| CP 50/4600 T | 400 | 220 | 180 | 290 | 159 | 131 | 545 | 110 | 50 PN 10 | 102 | 165 | 125 |                | 520                  | 320 | 535 | 0,6             | 46,0       |
| CP 50/5100 T | 400 | 220 | 180 | 290 | 159 | 131 | 545 | 110 | 50 PN 10 | 102 | 165 | 125 |                | 520                  | 320 | 535 | 0,6             | 46,1       |
| CP 50/5650 T | 400 | 220 | 180 | 290 | 159 | 131 | 545 | 110 | 50 PN 10 | 102 | 165 | 125 |                | 520                  | 320 | 535 | 0,6             | 57,9       |

## CP-G



# CP / CP-G / DCP / DCP-G - 2 POLOS

ELECTROBOMBA EN LÍNEA



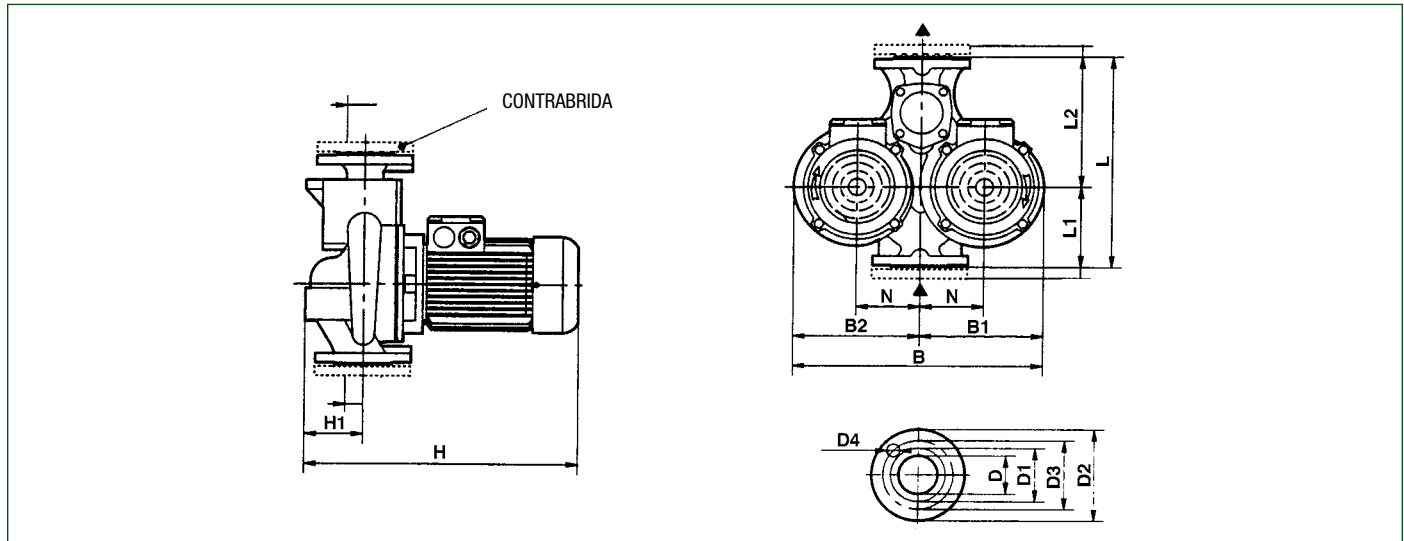
| MODELO                    | A   | B1  | B2  | C   | D   | D2  | D3  | S  | n° AGUJ. | H    | H1   | H2  | L   | L1    | L2    | M    | DIMENSIONES EMBALAJE |      |      | VOLUMEN (mc) | PESO Kg |
|---------------------------|-----|-----|-----|-----|-----|-----|-----|----|----------|------|------|-----|-----|-------|-------|------|----------------------|------|------|--------------|---------|
|                           |     |     |     |     |     |     |     |    |          |      |      |     |     |       |       |      | L/A                  | L/B  | H    |              |         |
| CP-G 65-1470/A/BAQE/1,5   | 160 | 144 | 126 | 144 | 65  | 145 | 185 | 18 | 4        | 574  | 107  | 279 | 360 | 180   | 180   | M16  | 680                  | 430  | 834  | 0,244        | 57      |
| CP-G 65-1900/A/BAQE/2,2   | 160 | 144 | 126 | 144 | 65  | 145 | 185 | 18 |          | 614  | 107  | 279 | 360 | 180   | 180   | M16  | 680                  | 430  | 834  | 0,244        | 58      |
| CP-G 65-2280/A/BAQE/3     | 180 | 144 | 126 | 144 | 65  | 145 | 185 | 18 |          | 632  | 107  | 307 | 360 | 180   | 180   | M16  | 680                  | 430  | 834  | 0,244        | 68      |
| CP-G 65-2640/A/BAQE/4     | 190 | 144 | 126 | 144 | 65  | 145 | 185 | 18 |          | 717  | 107  | 307 | 360 | 180   | 180   | M16  | 680                  | 430  | 1084 | 0,317        | 68      |
| CP-G 65-3400/A/BAQE/5,5   | 210 | 151 | 151 | 144 | 65  | 145 | 185 | 18 |          | 736  | 107  | 346 | 360 | 180   | 180   | M16  | 680                  | 430  | 1084 | 0,317        | 80      |
| CP-G 65-4100/A/BAQE/7,5   | 188 | 151 | 151 | 144 | 65  | 145 | 185 | 18 |          | 783  | 107  | 346 | 360 | 180   | 180   | M16  | 680                  | 430  | 1084 | 0,317        | 87      |
| CP-G 65-4700/A/BAQE/11    | 242 | 180 | 176 | 144 | 65  | 145 | 185 | 18 |          | 893  | 215  | 388 | 475 | 237,5 | 237,5 | M16  | 1200                 | 720  | 720  | 0,622        | 198     |
| CP-G 65-5500/A/BAQE/15    | 242 | 180 | 176 | 144 | 65  | 145 | 185 | 18 |          | 893  | 215  | 388 | 475 | 237,5 | 237,5 | M16  | 1200                 | 720  | 720  | 0,622        | 194     |
| CP-G 65-6150/A/BAQE/18,5  | 242 | 180 | 176 | 144 | 65  | 145 | 185 | 18 |          | 937  | 215  | 388 | 475 | 237,5 | 237,5 | M16  | 1200                 | 720  | 720  | 0,622        | 198     |
| CP-G 65-7350/A/BAQE/22    | 260 | 190 | 190 | 144 | 65  | 145 | 185 | 18 |          | 968  | 215  | 388 | 475 | 237,5 | 237,5 | M16  | 1200                 | 720  | 720  | 0,622        | 232     |
| CP-G 65-9250/A/BAQE/30    | 292 | 210 | 210 | 144 | 65  | 145 | 185 | 18 |          | 1058 | 215  | 388 | 475 | 237,5 | 237,5 | M16  | 1200                 | 720  | 720  | 0,622        | 310     |
| CP-G 80-1400/A/BAQE/2,2   | 160 | 135 | 118 | 144 | 80  | 160 | 200 | 18 |          | 8    | 616  | 105 | 281 | 360   | 180   | 180  | M16                  | 680  | 430  | 834          | 0,244   |
| CP-G 80-1700/A/BAQE/3     | 180 | 135 | 125 | 144 | 80  | 160 | 200 | 18 | 634      |      | 105  | 309 | 360 | 180   | 180   | M16  | 680                  | 430  | 834  | 0,244        | 71      |
| CP-G 80-2050/A/BAQE/4     | 190 | 135 | 125 | 144 | 80  | 160 | 200 | 18 | 719      |      | 105  | 309 | 360 | 180   | 180   | M16  | 680                  | 430  | 1084 | 0,317        | 71      |
| CP-G 80-2400/A/BAQE/5,5   | 210 | 135 | 151 | 144 | 80  | 160 | 200 | 18 | 738      |      | 105  | 348 | 360 | 180   | 180   | M16  | 680                  | 430  | 1084 | 0,317        | 83      |
| CP-G 80-2770/A/BAQE/7,5   | 188 | 178 | 151 | 144 | 80  | 160 | 200 | 18 | 795      |      | 115  | 358 | 440 | 220   | 220   | M16  | 680                  | 430  | 1084 | 0,317        | 91      |
| CP-G 80-3250/A/BAQE/11    | 242 | 178 | 176 | 144 | 80  | 160 | 200 | 18 | 893      |      | 115  | 388 | 440 | 220   | 220   | M16  | 1200                 | 720  | 720  | 0,622        | 196     |
| CP-G 80-4000/A/BAQE/15    | 242 | 178 | 176 | 144 | 80  | 160 | 200 | 18 | 893      |      | 115  | 388 | 440 | 220   | 220   | M16  | 1200                 | 720  | 720  | 0,622        | 167     |
| CP-G 80-5150/A/BAQE/18,5  | 242 | 178 | 176 | 144 | 80  | 160 | 200 | 18 | 937      |      | 115  | 388 | 440 | 220   | 220   | M16  | 1200                 | 720  | 720  | 0,622        | 121     |
| CP-G 80-5650/A/BAQE/22    | 260 | 190 | 190 | 144 | 80  | 160 | 200 | 18 | 968      |      | 115  | 388 | 500 | 250   | 250   | M16  | 1200                 | 720  | 720  | 0,622        | 124     |
| CP-G 80-6850/A/BAQE/30    | 292 | 210 | 210 | 144 | 80  | 160 | 200 | 18 | 1050     |      | 115  | 380 | 500 | 250   | 250   | M16  | 1200                 | 720  | 720  | 0,622        | 314     |
| CP-G 80-8600/A/BAQE/37    | 292 | 245 | 225 | 230 | 80  | 160 | 200 | 18 | 1113     |      | 140  | 445 | 620 | 310   | 310   | M16  | 1200                 | 720  | 720  | 0,622        | 424     |
| CP-G 80-9600/A/BAQE/45    | 315 | 245 | 232 | 230 | 80  | 160 | 200 | 18 | 1158     |      | 140  | 445 | 620 | 310   | 310   | M16  | 1200                 | 720  | 720  | 0,622        | 347     |
| CP-G 80-10200/A/BAQE/55   | 372 | 275 | 275 | 230 | 80  | 160 | 200 | 18 | 1248     | 140  | 473  | 620 | 310 | 310   | M16   | 2550 | 1300                 | 1300 | 4,31 | 621          |         |
| CP-G 100-1600/A/BAQE/4    | 190 | 156 | 126 | 144 | 100 | 180 | 220 | 18 | 8        | 686  | 140  | 346 | 500 | 250   | 250   | M16  | 1200                 | 720  | 720  | 0,622        | 64      |
| CP-G 100-1950/A/BAQE/5,5  | 210 | 158 | 150 | 144 | 100 | 180 | 220 | 18 |          | 775  | 140  | 385 | 500 | 250   | 250   | M16  | 1200                 | 720  | 720  | 0,622        | 102     |
| CP-G 100-2350/A/BAQE/7,5  | 188 | 158 | 150 | 144 | 100 | 180 | 220 | 18 |          | 822  | 140  | 385 | 500 | 250   | 250   | M16  | 1200                 | 720  | 720  | 0,622        | 89      |
| CP-G 100-2400/A/BAQE/11   | 242 | 193 | 176 | 144 | 100 | 180 | 220 | 18 |          | 915  | 140  | 410 | 550 | 275   | 275   | M16  | 1200                 | 720  | 720  | 0,622        | 127     |
| CP-G 100-3050/A/BAQE/15   | 242 | 193 | 176 | 144 | 100 | 180 | 220 | 18 |          | 915  | 140  | 410 | 550 | 275   | 275   | M16  | 1200                 | 720  | 720  | 0,622        | 150     |
| CP-G 100-3550/A/BAQE/18,5 | 242 | 193 | 176 | 144 | 100 | 180 | 220 | 18 |          | 959  | 140  | 410 | 550 | 275   | 275   | M16  | 1200                 | 720  | 720  | 0,622        | 146     |
| CP-G 100-3850/A/BAQE/22   | 260 | 192 | 190 | 230 | 100 | 180 | 220 | 18 |          | 990  | 140  | 410 | 550 | 275   | 275   | M16  | 1200                 | 720  | 720  | 0,622        | 259     |
| CP-G 100-4800/A/BAQE/30   | 292 | 210 | 210 | 230 | 100 | 180 | 220 | 18 |          | 1117 | 140  | 447 | 550 | 275   | 275   | M16  | 1200                 | 720  | 720  | 0,622        | 337     |
| CP-G 100-5600/A/BAQE/37   | 292 | 210 | 210 | 230 | 100 | 180 | 220 | 18 |          | 1117 | 140  | 447 | 550 | 275   | 275   | M16  | 1200                 | 720  | 720  | 0,622        | 397     |
| CP-G 100-6300/A/BAQE/45   | 315 | 235 | 235 | 230 | 100 | 180 | 220 | 18 |          | 1162 | 140  | 447 | 550 | 275   | 275   | M16  | 1200                 | 720  | 720  | 0,622        | 470     |
| CP-G 100-8300/A/BAQE/55   | 372 | 293 | 275 | 230 | 100 | 180 | 220 | 18 |          | 1288 | 175  | 513 | 670 | 335   | 335   | M16  | 1500                 | 760  | 725  | 0,827        | 627     |
| CP-G 125-4750/A/BAQE/37   | 292 | 252 | 210 | 230 | 125 | 210 | 250 | 18 |          | 8    | 1198 | 215 | 528 | 620   | 310   | 310  | M16                  | 1125 | 680  | 1300         | 0,995   |
| CP-G 125-5300/A/BAQE/45   | 315 | 252 | 235 | 230 | 125 | 210 | 250 | 18 | 1243     |      | 215  | 528 | 620 | 310   | 310   | M16  | 760                  | 725  | 1500 | 0,827        | 507     |
| CP-G 125-5800/A/BAQE/55   | 372 | 275 | 275 | 230 | 125 | 210 | 250 | 18 | 1333     |      | 215  | 558 | 620 | 310   | 310   | M16  | 760                  | 725  | 1500 | 0,827        | 539     |

# CP / CP-G / DCP / DCP-G - 2 POLOS

ELECTROBOMBA EN LÍNEA

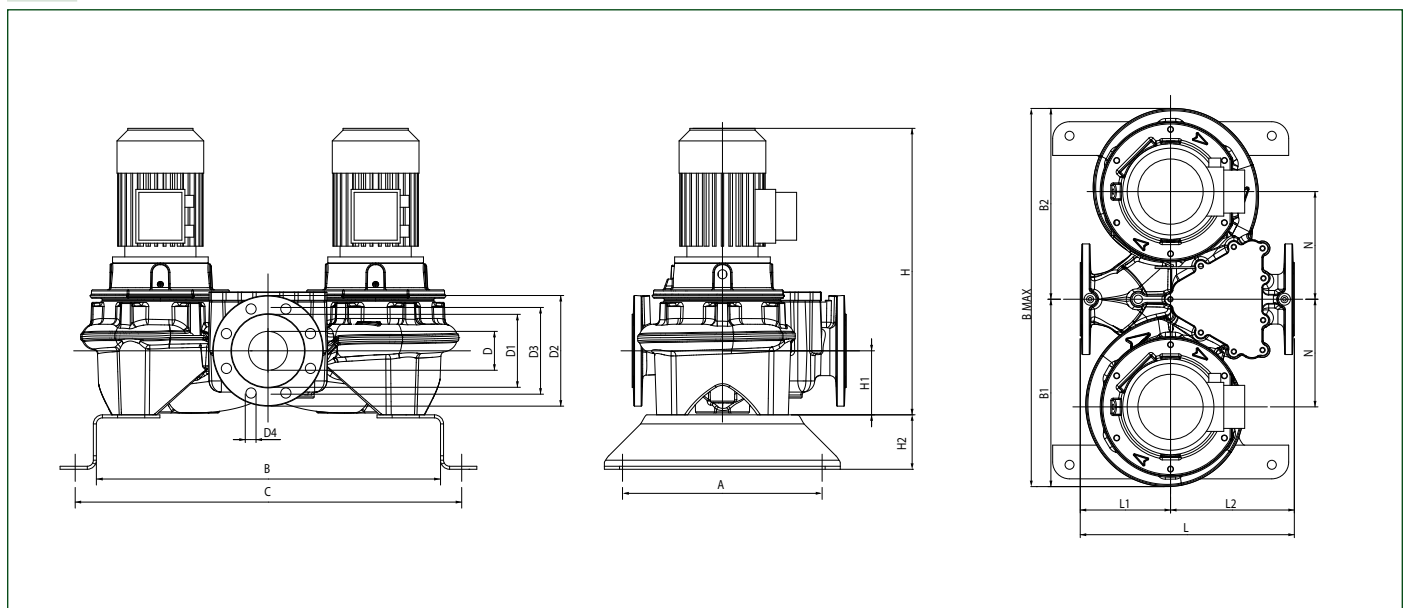


## DCP



| MODELO               | L   | L1  | L2  | B   | B1  | B2  | H   | H1  | N   | D       | D1  | D2  | D3  | Q               | DIMENSIONES EMBALAJE |     |      | VOLUMEN (mc) | PESO Kg |
|----------------------|-----|-----|-----|-----|-----|-----|-----|-----|-----|---------|-----|-----|-----|-----------------|----------------------|-----|------|--------------|---------|
|                      |     |     |     |     |     |     |     |     |     |         |     |     |     |                 | L/A                  | L/B | H    |              |         |
| <b>DCP 40/1250 T</b> | 340 | 130 | 210 | 397 | 200 | 197 | 425 | 100 | 100 | 40 PN6  | 88  | 150 | 110 | 4 AGUJ.<br>Ø 18 | 520                  | 320 | 535  | 0,06         | 50      |
| <b>DCP 40/1650 T</b> | 340 | 130 | 210 | 397 | 200 | 197 | 425 | 100 | 100 | 40 PN6  | 88  | 150 | 110 |                 | 520                  | 320 | 535  | 0,06         | 50      |
| <b>DCP 40/2050 T</b> | 340 | 130 | 210 | 397 | 200 | 197 | 445 | 100 | 100 | 40 PN6  | 88  | 150 | 110 |                 | 520                  | 320 | 535  | 0,06         | 52      |
| <b>DCP 40/2450 T</b> | 340 | 130 | 210 | 397 | 200 | 197 | 445 | 100 | 100 | 40 PN6  | 88  | 150 | 110 |                 | 520                  | 320 | 535  | 0,06         | 54      |
| <b>DCP 50/1550 T</b> | 365 | 145 | 220 | 427 | 217 | 210 | 455 | 110 | 105 | 50 PN10 | 102 | 165 | 125 | 4 AGUJ.<br>Ø 18 | 520                  | 320 | 535  | 0,07         | 56      |
| <b>DCP 50/1900 T</b> | 365 | 145 | 220 | 427 | 217 | 210 | 455 | 110 | 105 | 50 PN10 | 102 | 165 | 125 |                 | 520                  | 320 | 535  | 0,07         | 58      |
| <b>DCP 50/2450 T</b> | 365 | 145 | 220 | 427 | 217 | 210 | 455 | 110 | 105 | 50 PN10 | 102 | 165 | 125 |                 | 520                  | 320 | 535  | 0,07         | 66      |
| <b>DCP 50/3000 T</b> | 365 | 145 | 220 | 480 | 217 | 210 | 495 | 110 | 105 | 50 PN10 | 102 | 165 | 125 |                 | 580                  | 360 | 585  | 0,09         | 56      |
| <b>DCP 50/3650 T</b> | 410 | 170 | 240 | 480 | 245 | 235 | 535 | 110 | 120 | 50 PN10 | 102 | 165 | 125 | 580             | 360                  | 585 | 0,11 | 86           |         |

## DCP-G



# CP / CP-G / DCP / DCP-G - 2 POLOS

ELECTROBOMBA EN LÍNEA



| MODELO                     | A   | B   | C   | B1  | B2  | B max | D   | D1  | D2  | D3  | D4 | n° AGUJ. | H    | H1  | H2  | L   | L1  | L2  | M   | N   | DIMENSIONES EMBALAJE |      |      | VOL. (mc) | PESO Kg |
|----------------------------|-----|-----|-----|-----|-----|-------|-----|-----|-----|-----|----|----------|------|-----|-----|-----|-----|-----|-----|-----|----------------------|------|------|-----------|---------|
|                            |     |     |     |     |     |       |     |     |     |     |    |          |      |     |     |     |     |     |     |     | L/A                  | L/B  | H    |           |         |
| DCP-G 65-1470/A/BAQE/1,5   | 330 | 569 | 639 | 315 | 320 | 635   | 65  | 122 | 185 | 145 | 18 | 4        | 549  | 107 | 100 | 358 | 151 | 207 | M16 | 180 | 358                  | 635  | 549  | 0,12      | 127     |
| DCP-G 65-1900/A/BAQE/2,2   | 330 | 569 | 639 | 315 | 320 | 635   | 65  | 122 | 185 | 145 | 18 | 4        | 574  | 107 | 100 | 358 | 151 | 207 | M16 | 180 | 358                  | 635  | 574  | 0,13      | 140     |
| DCP-G 65-2280/A/BAQE/3     | 330 | 569 | 639 | 315 | 320 | 635   | 65  | 122 | 185 | 145 | 18 | 4        | 632  | 107 | 100 | 358 | 151 | 207 | M16 | 180 | 358                  | 635  | 632  | 0,14      | 167     |
| DCP-G 65-2640/A/BAQE/4     | 330 | 569 | 639 | 315 | 320 | 635   | 65  | 122 | 185 | 145 | 18 | 4        | 647  | 107 | 100 | 358 | 151 | 207 | M16 | 180 | 358                  | 635  | 647  | 0,15      | 151     |
| DCP-G 65-3400/A/BAQE/5,5   | 330 | 569 | 639 | 324 | 329 | 635   | 65  | 122 | 185 | 145 | 18 | 4        | 736  | 107 | 100 | 358 | 151 | 207 | M16 | 180 | 358                  | 635  | 736  | 0,17      | 202     |
| DCP-G 65-4100/A/BAQE/7,5   | 330 | 569 | 639 | 324 | 329 | 653   | 65  | 122 | 185 | 145 | 18 | 4        | 783  | 107 | 100 | 358 | 151 | 207 | M17 | 180 | 358                  | 653  | 736  | 0,17      | 248     |
| DCP-G 65-4700/A/BAQE/11    | 330 | 649 | 719 | 389 | 397 | 786   | 65  | 122 | 185 | 145 | 18 | 4        | 895  | 125 | 100 | 475 | 177 | 298 | M16 | 220 | 475                  | 786  | 895  | 0,33      | 388     |
| DCP-G 65-5500/A/BAQE/15    | 330 | 649 | 719 | 389 | 397 | 786   | 65  | 122 | 185 | 145 | 18 | 4        | 895  | 125 | 100 | 475 | 177 | 298 | M16 | 220 | 475                  | 786  | 895  | 0,33      | 420     |
| DCP-G 65-6150/A/BAQE/18,5  | 330 | 649 | 719 | 389 | 397 | 786   | 65  | 122 | 185 | 145 | 18 | 4        | 939  | 125 | 100 | 475 | 177 | 298 | M16 | 220 | 475                  | 786  | 950  | 0,35      | 450     |
| DCP-G 65-7350/A/BAQE/22    | 330 | 649 | 719 | 389 | 397 | 786   | 65  | 122 | 185 | 145 | 18 | 4        | 970  | 125 | 100 | 475 | 177 | 298 | M16 | 220 | 475                  | 786  | 970  | 0,36      | 521     |
| DCP-G 65-9250/A/BAQE/30    | 330 | 649 | 719 | 414 | 422 | 836   | 65  | 122 | 185 | 145 | 18 | 4        | 1000 | 125 | 100 | 475 | 177 | 298 | M16 | 220 | 475                  | 836  | 990  | 0,39      | 745     |
| DCP-G 80-1400/A/BAQE/2,2   | 330 | 580 | 650 | 305 | 310 | 615   | 80  | 137 | 200 | 160 | 18 | 8        | 586  | 115 | 100 | 360 | 165 | 195 | M16 | 180 | 360                  | 615  | 586  | 0,13      | 152     |
| DCP-G 80-1700/A/BAQE/3     | 330 | 580 | 650 | 305 | 310 | 615   | 80  | 137 | 200 | 160 | 18 | 8        | 644  | 115 | 100 | 360 | 165 | 195 | M16 | 180 | 360                  | 615  | 644  | 0,14      | 160     |
| DCP-G 80-2050/A/BAQE/4     | 330 | 580 | 650 | 305 | 310 | 615   | 80  | 137 | 200 | 160 | 18 | 8        | 659  | 115 | 100 | 360 | 165 | 195 | M16 | 180 | 360                  | 615  | 659  | 0,15      | 140     |
| DCP-G 80-2400/A/BAQE/5,5   | 330 | 580 | 650 | 327 | 332 | 659   | 80  | 137 | 200 | 160 | 18 | 8        | 748  | 115 | 100 | 360 | 165 | 195 | M16 | 180 | 360                  | 659  | 748  | 0,18      | 194     |
| DCP-G 80-2770/A/BAQE/7,5   | 330 | 620 | 690 | 355 | 365 | 720   | 80  | 137 | 200 | 160 | 18 | 8        | 795  | 115 | 100 | 440 | 165 | 195 | M16 | 180 | 440                  | 720  | 748  | 0,24      | 150     |
| DCP-G 80-3250/A/BAQE/11    | 330 | 620 | 690 | 344 | 374 | 738   | 80  | 137 | 200 | 160 | 18 | 8        | 893  | 115 | 100 | 440 | 165 | 195 | M16 | 180 | 440                  | 738  | 893  | 0,29      | 169     |
| DCP-G 80-4000/A/BAQE/15    | 330 | 620 | 690 | 344 | 374 | 738   | 80  | 137 | 200 | 160 | 18 | 8        | 893  | 115 | 100 | 440 | 165 | 195 | M16 | 180 | 440                  | 738  | 893  | 0,29      | 175     |
| DCP-G 80-5150/A/BAQE/18,5  | 362 | 662 | 732 | 405 | 415 | 820   | 80  | 137 | 200 | 160 | 18 | 8        | 943  | 115 | 100 | 500 | 180 | 260 | M16 | 200 | 500                  | 820  | 954  | 0,39      | 223     |
| DCP-G 80-5650/A/BAQE/22    | 362 | 662 | 732 | 405 | 415 | 820   | 80  | 137 | 200 | 160 | 18 | 8        | 974  | 115 | 100 | 500 | 180 | 260 | M16 | 200 | 500                  | 820  | 974  | 0,4       | 353     |
| DCP-G 80-6850/A/BAQE/30    | 362 | 662 | 732 | 426 | 394 | 862   | 80  | 137 | 200 | 160 | 18 | 8        | 1064 | 115 | 100 | 500 | 180 | 260 | M16 | 200 | 500                  | 862  | 1054 | 0,45      | 485     |
| DCP-G 80-8600/A/BAQE/37    | 500 | 804 | 924 | 530 | 540 | 1070  | 80  | 137 | 200 | 160 | 18 | 8        | 1081 | 115 | 100 | 620 | 220 | 280 | M16 | 235 | 620                  | 1070 | 1071 | 0,71      | 482     |
| DCP-G 80-9600/A/BAQE/45    | 500 | 804 | 924 | 530 | 540 | 1070  | 80  | 137 | 200 | 160 | 18 | 8        | 1096 | 115 | 100 | 620 | 220 | 280 | M16 | 235 | 620                  | 1070 | 1091 | 0,72      | 673     |
| DCP-G 80-10200/A/BAQE/55   | 500 | 804 | 924 | 567 | 577 | 1144  | 80  | 137 | 200 | 160 | 18 | 8        | 1216 | 115 | 100 | 620 | 220 | 280 | M16 | 235 | 620                  | 1144 | 1216 | 0,86      | 939     |
| DCP-G 100-1600/A/BAQE/4    | 362 | 637 | 717 | 330 | 345 | 675   | 80  | 137 | 200 | 160 | 18 | 8        | 687  | 140 | 100 | 500 | 280 | 340 | M16 | 300 | 500                  | 675  | 687  | 0,23      | 128     |
| DCP-G 100-1950/A/BAQE/5,5  | 362 | 637 | 717 | 335 | 350 | 685   | 80  | 137 | 200 | 160 | 18 | 8        | 775  | 140 | 100 | 500 | 280 | 340 | M16 | 300 | 500                  | 685  | 775  | 0,27      | 127     |
| DCP-G 100-2350/A/BAQE/7,5  | 362 | 637 | 717 | 335 | 350 | 685   | 80  | 137 | 200 | 160 | 18 | 8        | 822  | 140 | 100 | 500 | 280 | 340 | M16 | 300 | 500                  | 685  | 775  | 0,27      | 194     |
| DCP-G 100-2400/A/BAQE/11   | 362 | 733 | 813 | 395 | 410 | 805   | 100 | 156 | 220 | 180 | 18 | 8        | 915  | 140 | 100 | 550 | 191 | 309 | M16 | 200 | 550                  | 805  | 915  | 0,41      | 238     |
| DCP-G 100-3050/A/BAQE/15   | 362 | 733 | 813 | 395 | 410 | 805   | 100 | 156 | 220 | 180 | 18 | 8        | 915  | 140 | 100 | 550 | 191 | 309 | M16 | 200 | 550                  | 805  | 915  | 0,41      | 313     |
| DCP-G 100-3550/A/BAQE/18,5 | 362 | 733 | 813 | 395 | 410 | 805   | 100 | 156 | 220 | 180 | 18 | 8        | 959  | 140 | 100 | 550 | 191 | 309 | M16 | 200 | 550                  | 805  | 970  | 0,43      | 329     |
| DCP-G 100-3850/A/BAQE/22   | 362 | 733 | 813 | 395 | 410 | 805   | 100 | 156 | 220 | 180 | 18 | 8        | 990  | 140 | 100 | 550 | 191 | 309 | M16 | 200 | 550                  | 805  | 990  | 0,44      | 402     |
| DCP-G 100-4800/A/BAQE/30   | 362 | 753 | 833 | 440 | 450 | 890   | 100 | 156 | 220 | 180 | 18 | 8        | 1118 | 140 | 100 | 550 | 221 | 329 | M16 | 235 | 550                  | 890  | 1108 | 0,54      | 496     |
| DCP-G 100-5600/A/BAQE/37   | 362 | 753 | 833 | 440 | 450 | 890   | 100 | 156 | 220 | 180 | 18 | 8        | 1118 | 140 | 100 | 550 | 221 | 329 | M16 | 235 | 550                  | 890  | 1108 | 0,54      | 697     |
| DCP-G 100-6300/A/BAQE/45   | 362 | 753 | 833 | 465 | 475 | 940   | 100 | 156 | 220 | 180 | 18 | 8        | 1103 | 140 | 100 | 550 | 221 | 329 | M16 | 235 | 550                  | 940  | 1098 | 0,57      | 1062    |
| DCP-G 100-8300/A/BAQE/55   | 500 | 836 | 956 | 563 | 578 | 1141  | 100 | 156 | 220 | 180 | 18 | 8        | 1256 | 140 | 100 | 670 | 221 | 329 | M16 | 250 | 670                  | 1141 | 1256 | 0,96      | 1388    |
| DCP-G 125-4750/A/BAQE/37   | 500 | 810 | 930 | 515 | 535 | 1050  | 100 | 156 | 220 | 180 | 18 | 8        | 1198 | 175 | 100 | 620 | 266 | 404 | M16 | 300 | 620                  | 1050 | 1188 | 0,77      | 863     |
| DCP-G 125-5300/A/BAQE/45   | 500 | 810 | 930 | 515 | 535 | 1050  | 100 | 156 | 220 | 180 | 18 | 8        | 1183 | 175 | 100 | 620 | 266 | 404 | M16 | 300 | 620                  | 1050 | 1178 | 0,77      | 1028    |
| DCP-G 125-5800/A/BAQE/55   | 500 | 810 | 930 | 554 | 574 | 1128  | 100 | 156 | 220 | 180 | 18 | 8        | 1303 | 175 | 100 | 620 | 266 | 404 | M16 | 300 | 620                  | 1128 | 1303 | 0,91      | 1305    |